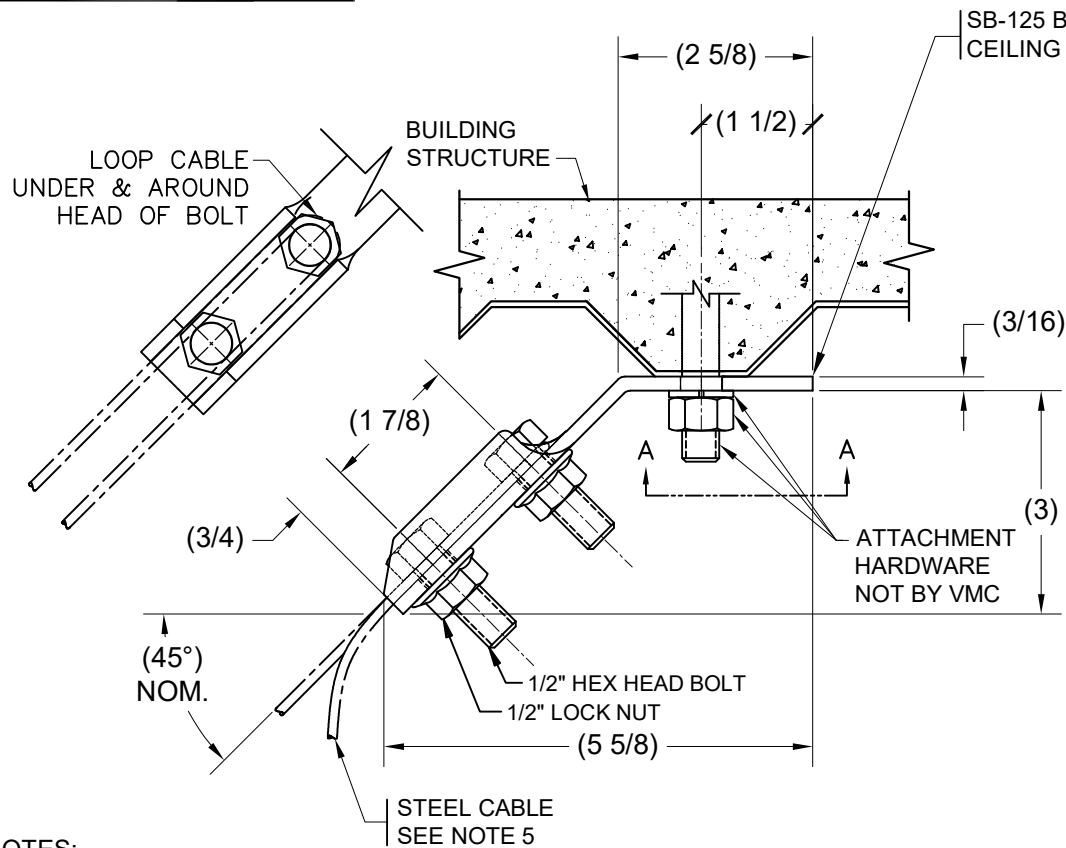
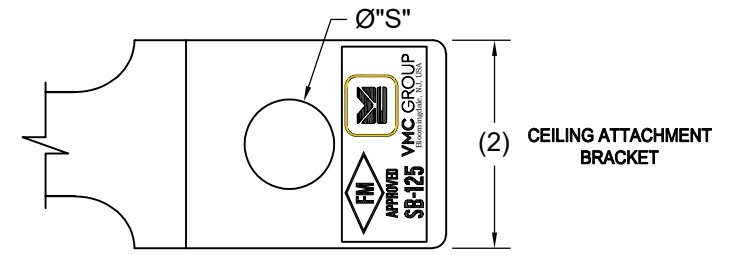


| REV. | DESCRIPTION | DATE | BY |
|------|-------------|------|----|
| | | | |

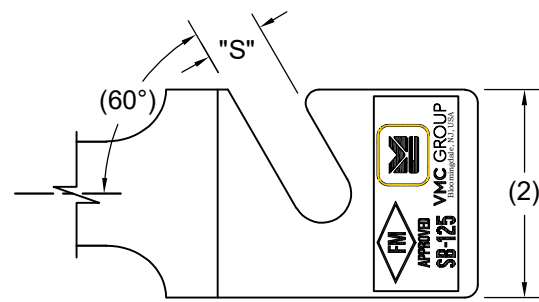


| KIT PART NUMBER | "S" | COLOR CODE | MAX. TENSION ALLOWABLE(LBS.) | KIT TYPE |
|-----------------|--------|--------------------|------------------------------|-----------|
| | | | 1/8" CABLE | |
| SB-125-01 | 9/16" | CLEAR ZINC COATED | 1100 | SLOT/HOLE |
| SB-125-02 | 11/16" | YELLOW ZINC COATED | | SLOT/HOLE |
| SB-125-03 | 9/16" | CLEAR ZINC COATED | | HOLE |
| SB-125-04 | 11/16" | YELLOW ZINC COATED | | HOLE |
| SB-125-05 | 9/16" | CLEAR ZINC COATED | | HOLE |
| | 11/16" | YELLOW ZINC COATED | | SLOT |
| SB-125-06 | 11/16" | YELLOW ZINC COATED | | HOLE |
| | 9/16" | CLEAR ZINC COATED | SLOT | |
| SB-125-07 | 11/16" | YELLOW ZINC COATED | HOLE | |
| | 9/16" | CLEAR ZINC COATED | HOLE | |

ALL RATING AT 45° FOR STEEL ATTACHMENT (LRFD)



CEILING ATTACHMENT BRACKET



PIPING/EQUIPMENT ATTACHMENT BRACKET (NOT TO BE USED AT CEILING ATTACHMENT NOT PART OF -03 & -04 KITS)

ALTERNATE VIEW A-A

OTHER MATERIALS, COMPOUNDS, OR FINISHES WITH EQUAL OR SUPERIOR PROPERTIES MAY BE SUBSTITUTED AS THEY BECOME AVAILABLE.

- NOTES:
1. MATERIAL: COLD ROLLED STEEL
 2. HARDWARE & BRACKETS ELECTRO ZINC PLATED
 3. KITS CONSIST OF 4 TOTAL BRACKET ASSEMBLIES EACH COMPRISED OF 2 BOLTS & 2 SERRATED 1/2" LOCK NUTS WITH EITHER SLOTTED OR HOLED BRACKET COMBINATIONS AS NOTED ON TABLE
 4. FIELD TORQUE 1/2" LOCK NUTS TO 35 FT-LBS.
 5. CABLE SOLD SEPARATELY PN: 140360-12.
 6. ALLOWABLE ANCHORAGE TO CONCRETE TO BE CALCULATED ON A JOB BASIS.
 7. FM APPROVAL APPLIES ONLY TO INSTALLATIONS USING STRUT.

APPROVED
Fixed Equipment Anchorage
Office of Statewide Health Planning and Development
OPA-1262
on
Anthony R. Pike
Anthony R. Pike (916) 654-3382



CERTIFIED FOR:

JOB NAME: _____

CUSTOMER: _____

CUSTOMER P.O.: _____

SALES ORDER: _____

MODEL SB-125 1100-2667 LBS.
SEISMIC CABLE RESTRAINT KIT

VMC GROUP
THE POWER OF TOGETHER™
Bloomington, NJ 07403
Houston, TX 77041

| | | |
|--------------|------|-------------------------|
| SCALE: | NONE | Member VISCMA |
| SHEET: | | |
| DRAWING NO.: | | REVISION |